



INTAKE SYSTEM

INSTALLATION INSTRUCTIONS

21-881DS

BMW

2015-20 M3 / M4

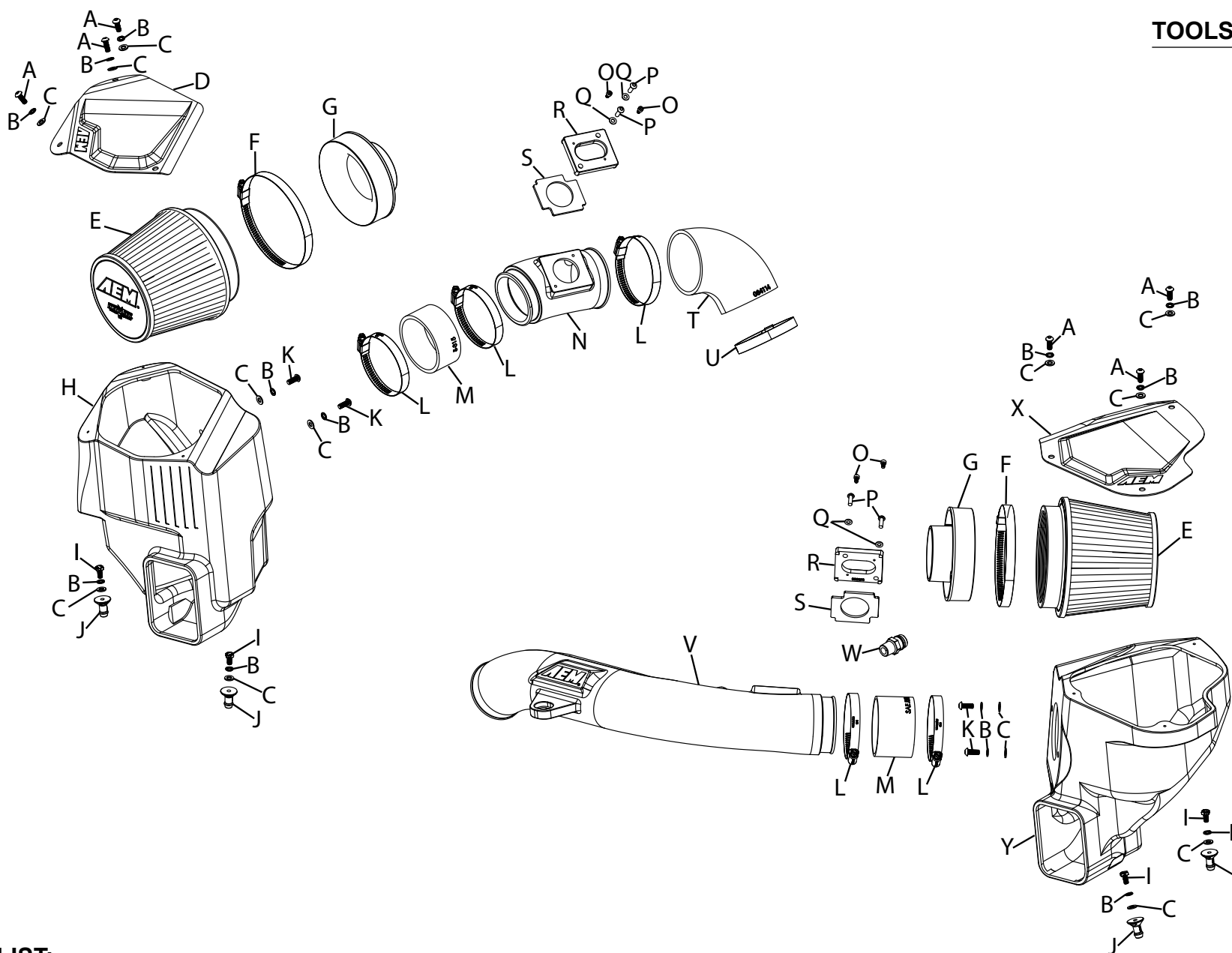
L6-3.0L TURBO

NOT LEGAL FOR SALE OR USE ON ANY POLLUTION CONTROLLED MOTOR VEHICLE IN CALIFORNIA OR STATES ADOPTING CALIFORNIA EMISSION PROCEDURES.

See aemintakes.com for CARB status on each part for a specific vehicle

TOOLS NEEDED:

- Ratchet
- Extension
- 6mm socket
- 8mm socket
- 10mm socket
- 13mm socket
- T20 torx
- 3mm allen key
- 4mm allen key
- 5mm allen key



PARTS LIST:

Description	Qty.	Part #	Description	Qty.	Part #	Description	Qty.	Part #
A BOLT; M6-1 X 12MM BTNHD	6	07794	I BOLT; M6 X 1 X 16MM BTNHD	4	07730	Q WASHER; 5MM FLAT	4	08212
B WASHER; M6, SPLIT LOCK	14	1-3025	J MOUNT; PLASTIC AIRBOX	4	8-186-1	R ADAPTER; MAF SENSOR	2	088098
C WASHER; 6MM FLAT	14	08269	K BOLT; M6-1 X 16MM HEX	4	07812	S GASKET; MAF ADAPT	2	09501
D LID; AIRBOX, RT SIDE	1	088090	L HOSE CLAMP; #48	5	08601	T HOSE; 3"ID ELBOW	1	084114
E AIR FILTER	2	21-2072DK	M HOSE; 3"ID X 1.75"L	2	08190	U HOSE CLAMP; #52	1	08610
F HOSE CLAMP; #80	2	08694	N TUBE; (PB)	1	087506	V TUBE; (PA)	1	087505
G ADAPTER; FILTER 3"OD	2	21569	O BOLT; M4-.7 X 8MM	4	07733	W FITTING; QC, 3/4"OD X 1.12"L	1	82934
H AIRBOX,LT SIDE	1	087507	P BOLT; M5 X .8 X 20MM	4	22208	X LID; AIRBOX, LT SIDE	1	088089
						Y AIRBOX, RT SIDE	1	087508

If you need any assistance please call 1-800-858-3333 to speak with a representative in our Customer Service Center before returning the product.

Read and understand these instructions BEFORE attempting to install this product. Failure to follow installation instructions and not using the provided hardware may damage the intake tube, throttle body and engine.

TO START:

1. Turn off the ignition and disconnect the negative battery cable.

NOTE: Disconnecting the negative battery cable erases pre-programmed electronic memories. Write down all memory settings before disconnecting the negative battery cable. Some radios will require an anti-theft code to be entered after the battery is reconnected. The anti-theft code is typically supplied with your owner's manual. In the event your vehicles anti-theft code cannot be recovered, contact an authorized dealership to obtain your vehicles anti-theft code.



2. Lift up the engine cover and set aside.



3. Remove the passenger side and drivers side cowl panel close outs to gain access to the strut tower brace bolts.



4. Remove the bolt that secures the coolant bottle to the strut tower brace.



5. Remove the hardware that secures the strut tower brace and then remove the brace from the vehicle.



6. Disconnect the CCV tube quick connect fitting from the driver's side factory intake tube.



7. Loosen the hose clamp that secures the drivers side intake tube to the turbo inlet hose and separate the tube from the hose.



8. Separate the coolant line from driver's side intake tube and then unhook the center mount.



9. Disconnect the mass air sensor electrical connection and then lift the entire driver side intake system and remove it from the vehicle.



10. Loosen the hose clamp that secures the passenger side air filter housing to the turbo inlet hose and disconnect the mass air sensor electrical connection.



11. Remove the passenger side air filter housing from the vehicle.



12. Loosen the hose clamp that secures the turbo inlet hose to the turbo and then remove the hose.



13. Install the filter adapter into the passenger side AEM air filter housing.



14. Install mounting studs into the AEM passenger side air filter housing.



15. Install the filter adapter into the Driver's side AEM air filter housing.



16. Install the mounting studs into the driver's side AEM air filter housing.



17. Install the gaskets onto the mass air sensor adapter plates.



18. Install the mass air sensor adapter on to the Driver's side AEM intake tube as shown. **NOTE the position of the adapter plate and install it in the correct direction.**



19. Apply thread sealant to the threads of the provided CCV quick connect fitting and then install the fitting into the AEM intake tube.



20. Install the remaining mass air sensor adapter plate onto the passenger side AEM intake tube.



21. Install the provided coupler onto the filter adapter and secure with the provided hose clamps.



22. Remove the mass air sensor from the passenger side factory air filter housing and install it into the adapter on the AEM passenger side intake tube.



23. Remove the mass air sensor from the driver's side factory air filter housing and install it into the AEM driver's side intake tube mass air sensor adapter.



24. Install the provided coupler onto the passenger side turbo inlet and secure with the provided hose clamp.



25. Install the AEM intake tube assembly into the coupler installed onto the passenger side turbo. Do not tighten the hose clamp.



26. Install the AEM passenger side air filter housing into the vehicle and align with the fresh air inlet. The mounting studs should insert into the factory air box mounting grommets. Connect the intake tube, align everything for best fit and then secure all the hose clamps.



27. Reconnect the mass air sensor electrical connection.



28. Install the driver side AEM air filter housing into the vehicle so the mounting studs insert to the factory mounting grommets.



29. Install the driver side AEM intake tube into the factory turbo inlet hose and the coupler on the filter adapter.



30. Secure the factory center intake tube mount to the AEM intake tube and then tighten the hose clamps to secure the intake tube.



31. Reconnect the mass air sensor electrical connection.



32. Install the AEM air filters and secure with the provided hose clamps.



33. Install the carbon fiber air filter covers.



34. Reinstall the Strut tower brace, cowl covers and engine cover.

Reassemble Vehicle

Position the inlet pipes for the best fitment. Be sure that the pipes or any other components do not contact any part of the vehicle. Tighten the rubber mount, all bolts, and hose clamps. Check for proper hood clearance. Re-adjust pipes if necessary and re-tighten them. Inspect the engine bay for any loose tools and check that all fasteners that were moved or removed are properly tightened. Reconnect negative battery terminal and start engine. Let the vehicle idle for 3 minutes. Perform a final inspection before driving the vehicle.

Service and Maintenance

AEM Induction Systems requires cleaning the intake system's air filter element every 100,000 miles. When used in dusty or off-road environments, our filters will require cleaning more often. We recommend that you visually inspect your filter once every 25,000 miles to determine if the screen is still visible. When the screen is no longer visible some place on the filter element, it is time to clean it. To clean, purchase our Synthetic air filter cleaner, part number AEM-1-1000 and follow the easy instructions. Use window cleaner to clean your powder coated AEM® intake tube.

NOTE: DO NOT USE aluminum polish on powder coated AEM® intake tubes.

NOT LEGAL FOR SALE OR USE ON ANY POLLUTION CONTROLLED MOTOR VEHICLE IN CALIFORNIA OR STATES ADOPTING CALIFORNIA EMISSION PROCEDURES.

See aemintakes.com for CARB status on each part for a specific vehicle

AEM Air Intake System Warranty Policy

AEM® warrants that its intake systems will last for the life of your vehicle. AEM will not honor this warranty due to mechanical damage (i.e. improper installation or fitment), damage from misuse, accidents or flying debris. AEM will not warrant its powder coating if the finish has been cleaned with a hydrocarbon-based solvent. The powder coating should only be cleaned with a mild soap and water solution. Proof of purchase of both the vehicle and AEM intake system is required for redemption of a warranty claim.

This warranty is limited to the repair or replacement of the AEM part. In no event shall this warranty exceed the original purchase price of the AEM part nor shall AEM be responsible for special, incidental or consequential damages or cost incurred due to the failure of this product. Warranty claims to AEM must be transportation prepaid and accompanied with dated proof of purchase. This warranty applies only to the original purchaser of product and is nontransferable. Improper use or installation, use for racing, accident, abuse, unauthorized repairs or alterations voids this warranty. AEM disclaims any liability for consequential damages due to breach of any written or implied warranty on all products manufactured by AEM. Warranty returns will only be accepted by AEM when accompanied by a valid Return Merchandise Authorization (RMA) number. Credit for defective products will be issued pending inspection. Product must be received by AEM within 30 days of the date RMA is issued.

If you have a warranty issue, please call (800) 992-3000 and our customer service department will assist you. A proof of purchase is required for all AEM warranty claims.